

STONE



*Lesbourne Road RH2*

£1,800

*“At Stone, we’re passionate about  
the unique and awe-inspiring  
architectural elements that transform  
houses into dream homes.”*

---

*The Stone Family*





This bright and spacious apartment is a desirable offering, situated in the vibrant heart of Reigate. Set within beautifully landscaped grounds, this property provides a serene oasis amidst the bustling town centre.

As you step inside, you are greeted by the hallmark features that set this building apart – towering ceilings and expansive windows that bathe every room in natural light. The neutral decor throughout the apartment creates a serene and inviting atmosphere, ready to accommodate any personal style.

The open plan living area is the heart of the home, seamlessly integrating a stylish, modern kitchen with sleek finishes and space for dining.

The apartment boasts two generously sized double bedrooms. The master suite is a sanctuary of comfort, featuring an en-suite shower room with contemporary finishes and built-in cabinetry for all your storage needs.

The second double bedroom is equally spacious, offering flexibility for guests, a home office, or additional family members. A well-appointed family bathroom, complete with a bath, serves the second bedroom and visitors alike.

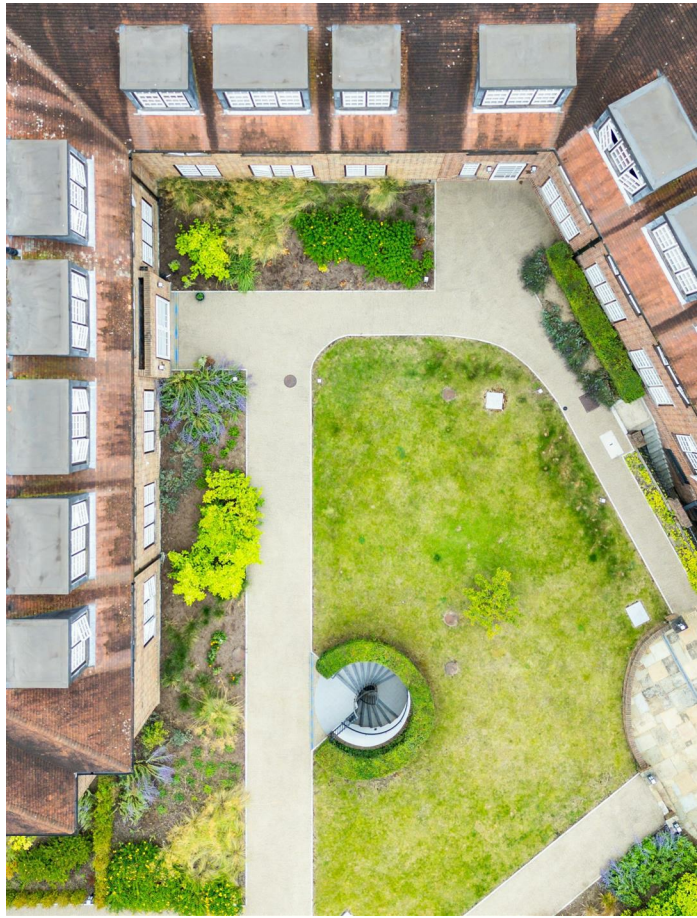
With ample storage solutions throughout, this apartment ensures a clutter-free living experience. Additionally, the property benefits from allocated parking, adding to the convenience of town centre living.

















Beyond its enchanting exterior, Linden Court offers more than just a home – it offers a lifestyle. Picture turning out of the development and strolling down Bell Street, where a tapestry of local shops, cafes, and boutiques await, inviting you to indulge in the vibrant community spirit that defines Reigate.

The picturesque Priory Park sits a stone's throw away, with a modern cafe, large lake and woodland walks.

For young families, the convenience couldn't be more enticing. Lesbourne Road is surrounded by a plethora of popular schools, ensuring that education is always within reach.

And for the modern commuter, Reigate train station stands a mere 12 minute walk away, promising effortless connections to bustling city life while allowing you to retreat to the tranquil embrace of home at day's end.

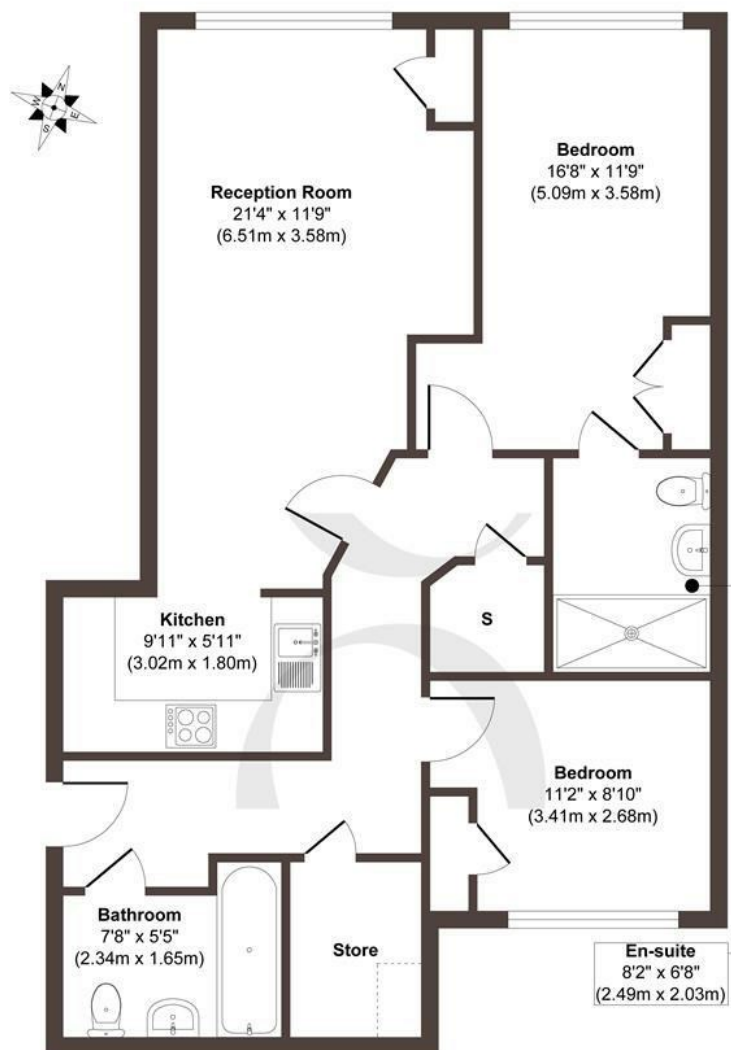












Approx. Gross Internal Floor Area 818 sq. ft / 76.08 sq. m

Illustration for identification purposes only, measurements are approximate, not to scale.

Produced by Elements Property

**STONE**

## The Details

- Available now!
- Two bedroom spacious apartment in the heart of Reigate
- Tall ceiling and expansive windows flood the rooms with light
- Open plan living and kitchen space, with sleek modern kitchen
- Two double bedrooms, one with en-suite shower room
- Contemporary bathroom designs
- Ideally situated for convenience, commuting and community
- Beautifully landscaped grounds
- Allocated parking space

Size  
Approx 839.59 sq ft

Energy Performance Certificate (EPC)  
Rating B

Council Tax Band  
C



STONE

Let's *Talk*

01737 301 557

hello@stoneestateagents.co.uk

stoneestateagents.co.uk

The particulars above are a guide, not an offer or contract. Descriptions photographs and plans are not statements or representations of fact. Measurements are approximate and not to scale. Prospective purchasers must verify the accuracy of the information within the particulars. Stone does not give any representations or warranties; nor represent the Seller legally. Stone has no liability, for any costs, losses or expenses incurred by the Seller or a prospective buyer relating to the sales and buying transaction. Our Sales Disclaimer, trading names and privacy policy on how your data is processed and used is found in full on our website in our Privacy Statement.

© Stone Estate Agents 2023 All rights Reserved